

One Washington

Program/Project Overview

One Washington, led by the Office of Financial Management, is an enterprise-wide transformation program focused on replacing the state's administrative systems technology with a cloud-based solution - Workday. Phase 1A of the program includes replacing the Agency Financial Reporting System (AFRS). This replacement will allow OFM to retire several old systems impacting other agencies.

- Retiring systems include:
 - AFRS - the state's accounting system of record for 40 years.
 - CAS - the cost allocation system that helps several agencies get and use federal funding more efficiently.
 - CAMS - the system supporting the tracking and depreciation of capital assets.
 - TALS - the allotment system used to plan and track agency spending.
- This phase will also enable the Department of Enterprise Services to turn off the accounts receivable and invoicing systems that 13 agencies are using.
- In total, at least 22 financial systems will be retired.

Critical Risks and Issues

One Washington closely monitors risks and issues as part of documented project management processes. The following items have been identified as current key risks and One Washington is looking forward to providing an overview during the Board meeting.

- Completing the integrations
- Agency technical readiness
- Finalizing the go-live date

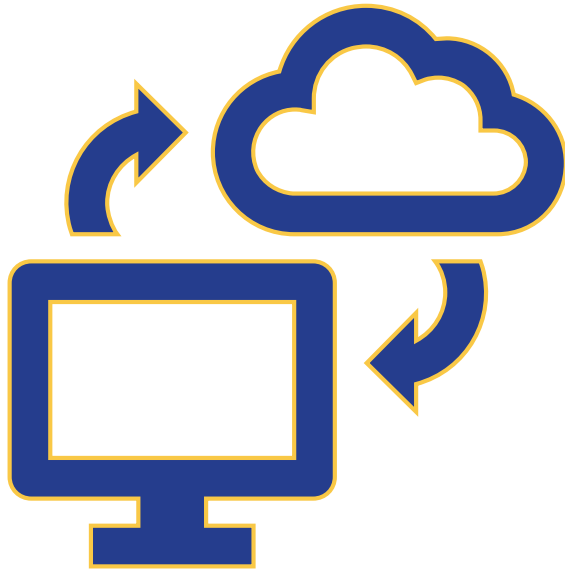
Consultation Needed

The program will provide an overview of status and key risks during the Board meeting for discussion, questions, and consultation.

One Washington: Additional Information



One Washington: Key Risks and Issues Expanded



RISK: COMPLETING INTEGRATIONS

- Changes to integrations due to design changes
- Performance testing findings
- Integration testing results makes it difficult to estimate the remaining effort and may impact agency technical readiness.

RISK: AGENCY TECHNICAL READINESS

- Agencies dependence on One Washington team for Workday and translation between Legacy to Workday knowledge
- Agencies needs for final One Washington Integrations to be finalized
- If agencies cannot prepare technically for the Workday solution, the state maybe in jeopardy to go-live.

RISK: FINALIZING THE GO-LIVE DATE

- Complete analysis of transformation layer and which agency technical systems will be able to utilize
- Confidence in dates for remaining integration work
- Confidence in dates for remaining agency technical readiness

Hi-level Roadmap: Draft as of 3/4/25

Planning in process dates are subject to change

Legend:

Non-critical Path

Non-critical Path w/ Contingency

Critical Path

Critical Path w/ Contingency



Training is based on go-live date and will be subject to change

Tasks

Design Finalization

WD Sessions & AWE

Integration, Design, & Unit Test

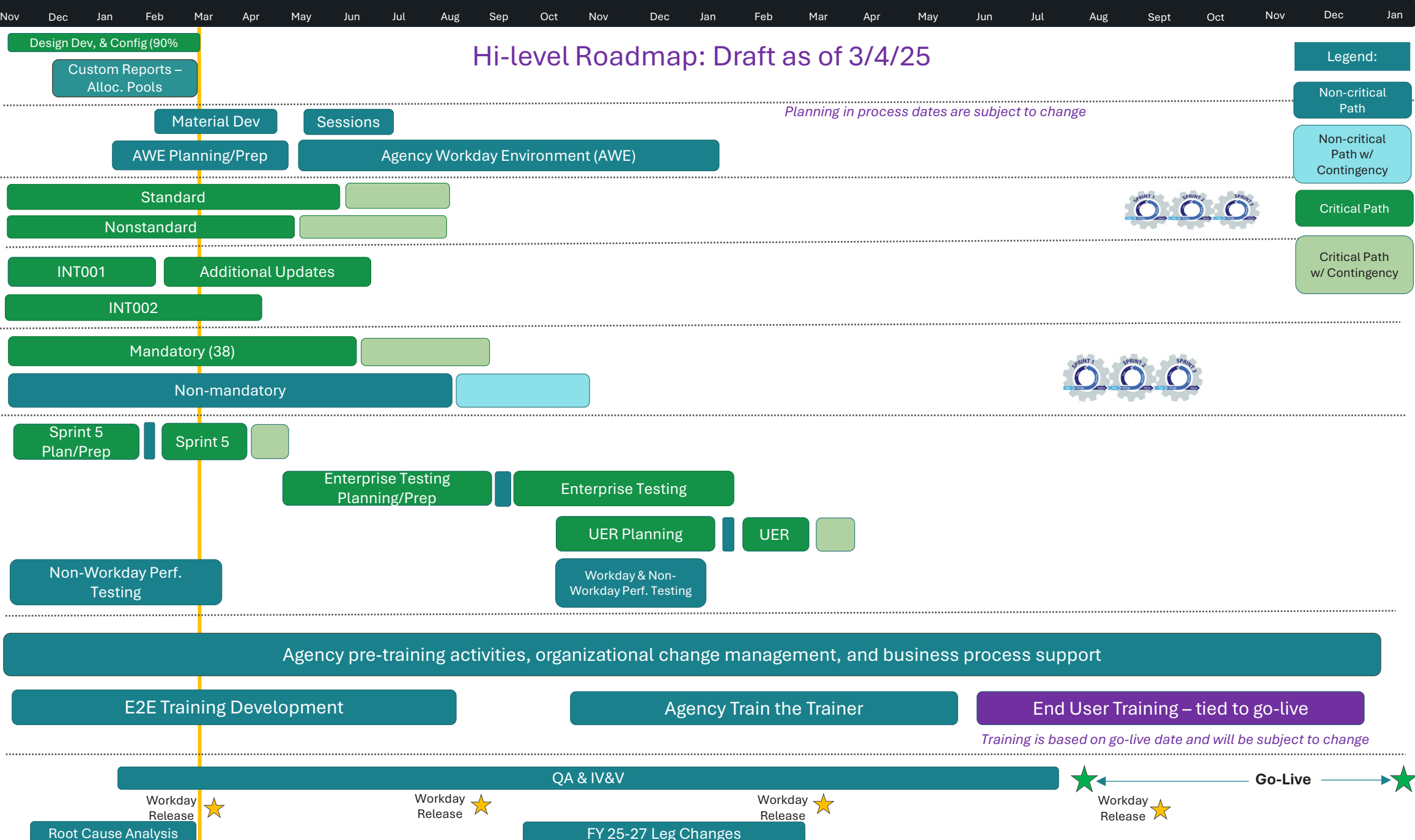
EIC

LSR

Testing

OCM / Agency Readiness Support / Training

Other Factors



Design Dev, & Config (90%)

Custom Reports – Alloc. Pools

Material Dev

Sessions

AWE Planning/Prep

Agency Workday Environment (AWE)

Standard

Nonstandard

INT001

Additional Updates

INT002

Mandatory (38)

Non-mandatory

Sprint 5 Plan/Prep

Sprint 5

Enterprise Testing Planning/Prep

Enterprise Testing

UER Planning

UER

Non-Workday Perf. Testing

Workday & Non-Workday Perf. Testing

Agency pre-training activities, organizational change management, and business process support

E2E Training Development

Agency Train the Trainer

End User Training – tied to go-live

QA & IV&V

Root Cause Analysis

FY 25-27 Leg Changes

Workday Release ★

Workday Release ★

Workday Release ★

Workday Release ★

Go-Live